



****AVAILABLE IMMEDIATELY****

****UNFURNISHED**** A smart, first floor flat found on Mitford Gardens, Wideopen. A well apportioned flat available on an unfurnished basis, this is a great property available in a super location, not to be missed!

The accommodation briefly comprises; ground floor entrance with stairs to first floor landing; lounge to the front with bay window, alcove shelving and electric fire; two bedrooms, a small double to the front and a larger master to the rear, both with fitted wardrobe space; family bathroom WC; spacious kitchen to the rear with appliances, tiled splash-backs and laminate flooring; door to the rear leading to outside. Externally there is a private garden to the front, laid mainly to lawn with fenced & hedges boundaries. There is also on street parking.

With double glazed windows and gas central heating this great property is perfect for professional tenants.

Available Immediately | £725pcm | Unfurnished |
First Floor Flat | 734 Sq ft (68.2 m2) | Two
Bedrooms | Lounge | Spacious Kitchen |
Bathroom WC | Good Storage Space |
Unfurnished | Front Garden | On Street Parking |
GCH & DG | Great Location | Council Tax
Band: A | EPC Rating: D

£725 PCM

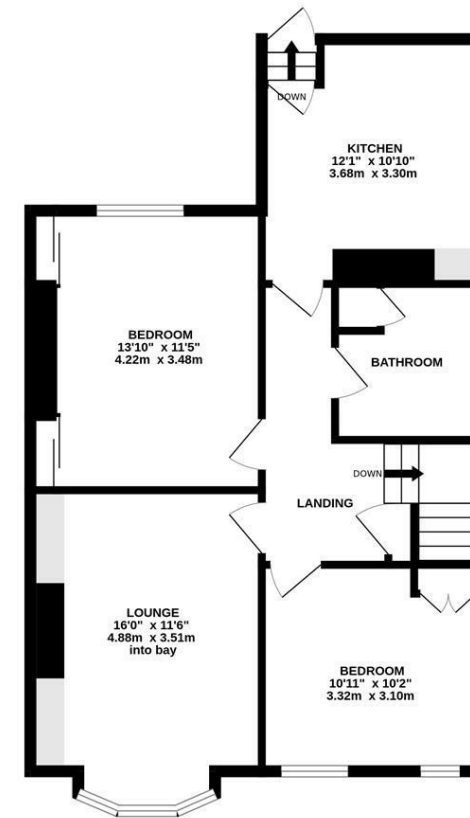
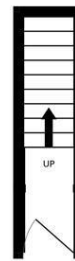
IMPORTANT NOTE: These particulars and the descriptions and measurements herein do not constitute representation and whilst every effort has been made to ensure accuracy, this cannot be guaranteed.



GROUND FLOOR
689 sq.ft. (64.3 sq.m.) approx.



FIRST FLOOR
689 sq.ft. (64.3 sq.m.) approx.



TOTAL FLOOR AREA : 734 sq.ft. (68.2 sq.m.) approx.

Whilst every attempt has been made to ensure the accuracy of the floorplan contained here, measurements of doors, windows, rooms and any other items are approximate and no responsibility is taken for any error, omission or mis-statement. This plan is for illustrative purposes only and should be used as such by any prospective purchaser. The services, systems and appliances shown have not been tested and no guarantee as to their operability or efficiency can be given.
Made with Metropix ©2023

